

twice as nice

More than double its former size—thanks to space borrowed from a bedroom—this bath is now a haven for two.

BEFORE

Joe Menashe saw nothing but problems in the bathroom of this 1960s home in Portland, Oregon. The purple walls were overwhelming. Elbowroom was decidedly lacking. And the bath was shared by the master and guest bedrooms—with a door leading to each—for a clumsy floor plan. Joe's wife, Joanne, on the other hand, saw nothing but potential. "I knew we could do what we wanted," she says.

AFTER

Enter designers Erin Davis and Arlene Lord, who removed the wall between the existing bath and guest bedroom. Joanne envisioned a good chunk of the square footage for a walk-in closet, but Davis and Lord presented another option. "Their plan featured reach-in closets and a dressing area," Joanne says. "It turned out to be much more efficient."

The closets, clad in light-diffusing frosted glass, line the bath's long interior wall. They're just steps from back-to-back vanities, yet shielded by a partial wall.

Light flows into the reworked space from expansive new windows—one above the tub and the other above new built-in cabinets. A new shower and water closet fill the space occupied by the original vanity. Creamy white porcelain tile washes across the floor, tub deck, and shower, blending peacefully with the antique white woodwork and the frosted glass. "When I walk in here, I am instantly calm," Joanne says.

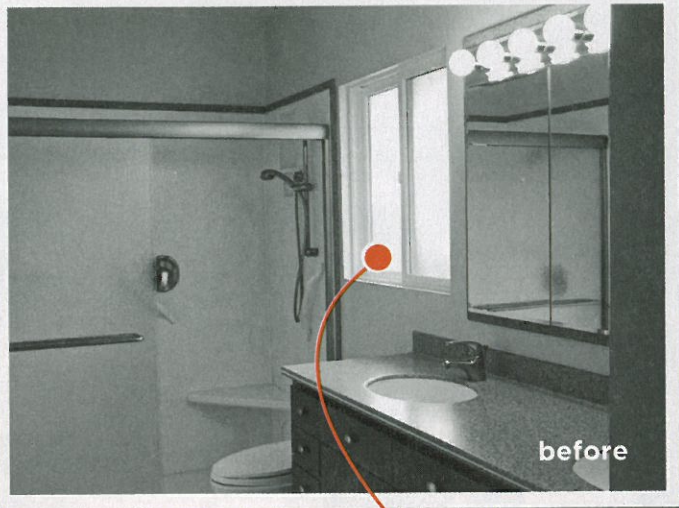
RESOURCES begin on page 108.

Photographer: Jon Jensen Field editor: Barbara Mundall



For more great bathroom ideas, go to
RemodelingCenter.com/ba.

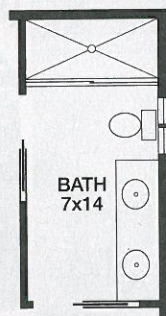
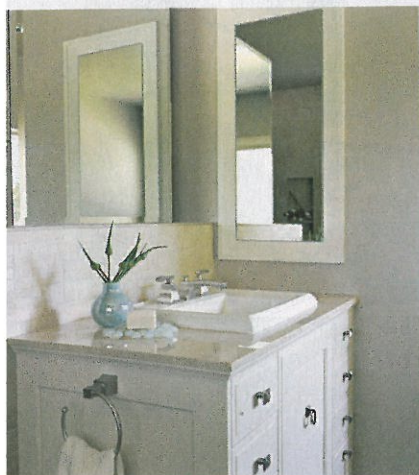




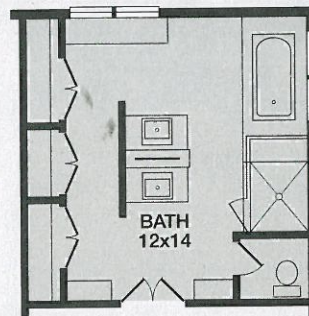
this photo: Frosted-glass closet doors enhance the bath's light and spacious feel. Slim pendant lights and a double-sided mirror separate back-to-back vanities.



this photo: Soft light spills into the bath through a new window over the soaking tub.



BEFORE



AFTER

■ CHANGE

above: Built-in cabinets expand the rich storage offered by the bank of closets. The sconce-lit dressing area features a full-length mirror.
far left: Mirrored medicine cabinets are recessed into the wall that separates the vanities from the dressing area.